

STRUCTURAL STEEL BILL OF MATERIAL

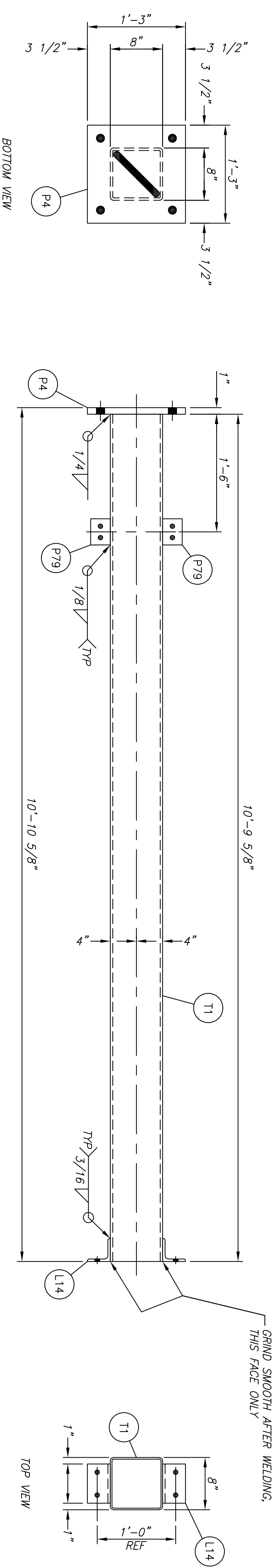
MARK	QTY	DESCRIPTION	LENGTH		WEIGHT		REMARKS
			FEET	INCHES	EACH	T EXT	
A1	10	ASSEMBLY	-	-	356.5	3565.0	
T1	1	HSS 8 X 8 X 1/4	0	9 5/8	278.9	278.9	
L14	2	L 3 1/2 X 3 1/2 X 1/2	10	6	5.2	10.4	
P4	1	PL 1 X 15	1	3	63.8	63.8	
P79	2	PL 1/2 X 3	0	4	1.7	3.4	
A2	4	ASSEMBLY	-	-	537.2	2148.8	
T2	1	HSS 8 X 8 X 1/4	17	9 5/8	459.6	459.6	
L14	2	L 3 1/2 X 3 1/2 X 1/2	10	6	5.2	10.4	
P4	1	PL 1 X 15	1	3	63.8	63.8	
P79	2	PL 1/2 X 3	0	4	1.7	3.4	
A50	14	ASSEMBLY	-	-	25.5	357.0	
P594	1	PL 3/4 X 8	1	3	25.5	25.5	

TOTAL WEIGHT THIS SHEET (NOT INCLUDING FINISH): 6020.8 POUNDS

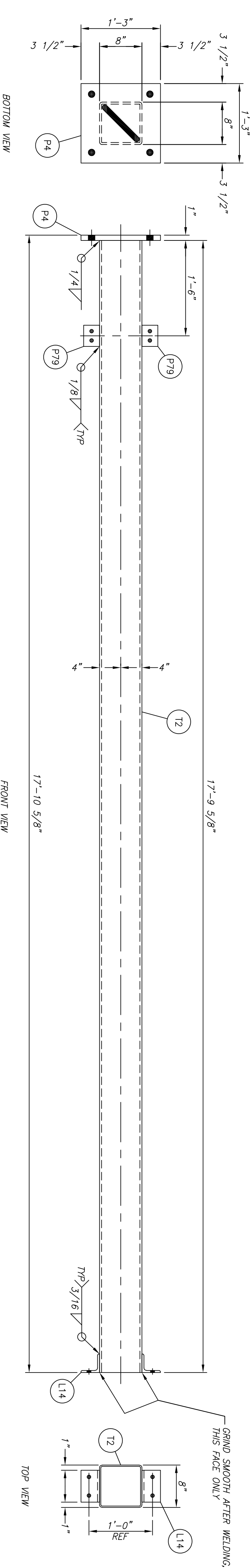
ERECTION BOLTS			
70	EACH	5/8"	DIA 2 1/4"
	EACH		LONG A325 BOLTS WITH HEAVY HEX NUT AND HARDENED WASHER
	EACH		DIA LONG A325 BOLTS WITH HEAVY HEX NUT AND HARDENED WASHER
	EACH		DIA LONG A325 BOLTS WITH HEAVY HEX NUT AND HARDENED WASHER
	EACH		DIA LONG A307 BOLTS WITH HEAVY HEX NUT AND HARDENED WASHER

MARK			
MARK	DESCRIPTION	MATERIAL	FINISH
MARK EACH STRUCTURE WITH ASSEMBLY NUMBER, MARK OCCURS APPROXIMATELY 2'-0" ABOVE BASEPLATE, MARK BEAMS AND BOLTS 2'-0" FROM ONE END, AS PER SPECIFICATION.		HSS SHAPES: ALL OTHER STEEL	HOT DIP GALVANIZED
		ASTM A500, GRADE B	
		ASTM A575, GRADE B	
		ASTM A325, GRADE B	
		ASTM A307, GRADE B	
		STRENGTHENED W/HEAVY HEX NUT AND HARDENED WASHER	

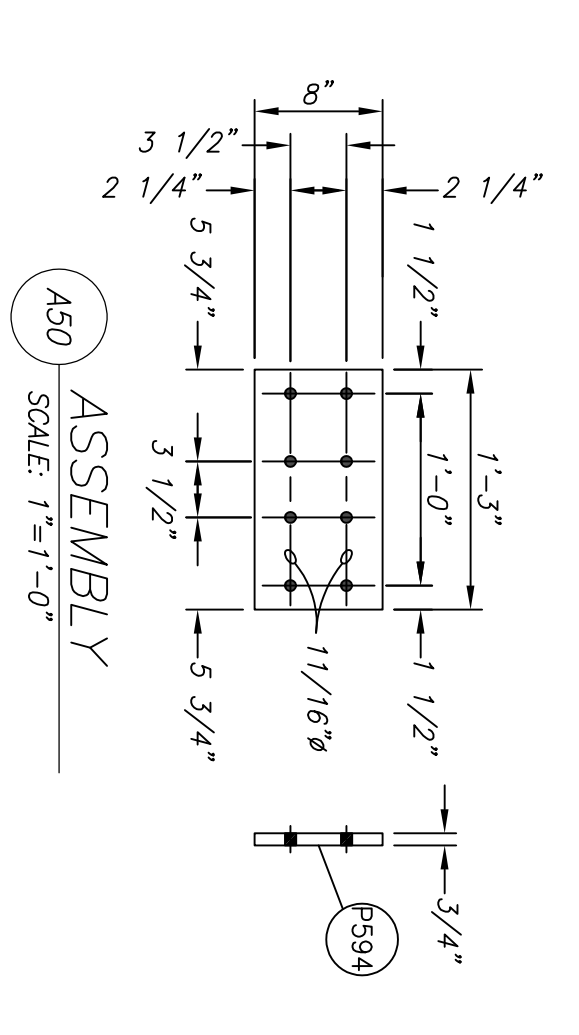
- NOTES
1. WELDING ELECTRODES SHALL BE E70XX.
 2. * VERIFY DIMENSION WITH ENGINEER BEFORE FABRICATION.
 3. ALL FLAT PLATES SHALL BE PROCESSED USING COMPUTERIZED MACHINES FOR ACQUISITION IN CUTTING BOLT HOLE PATTERNS & SLOTS.



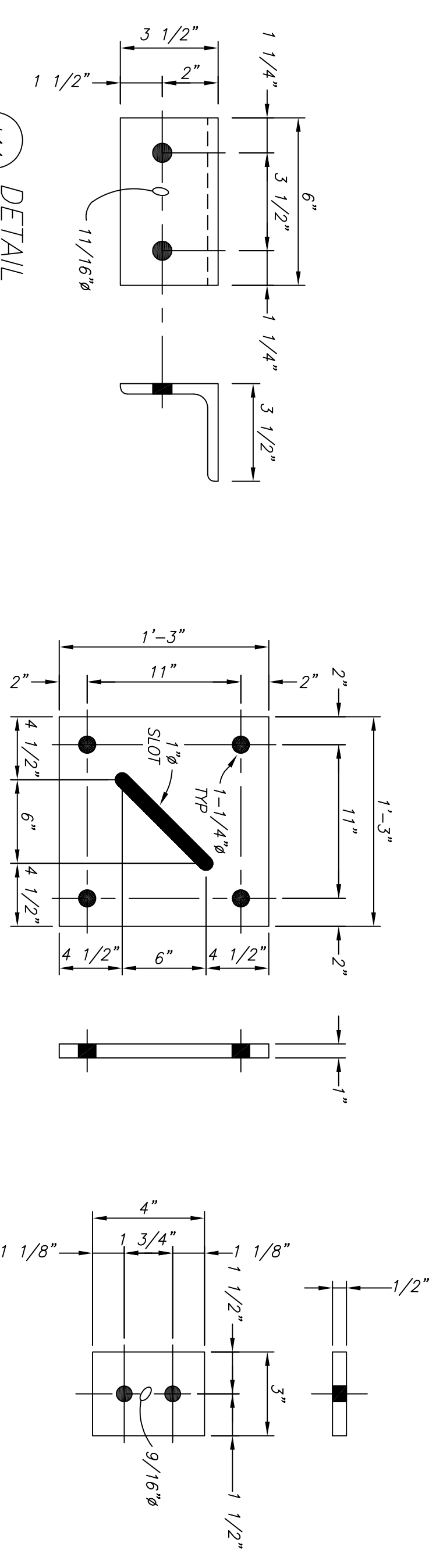
A1 ASSEMBLY
SCALE: 1"=1'-0"



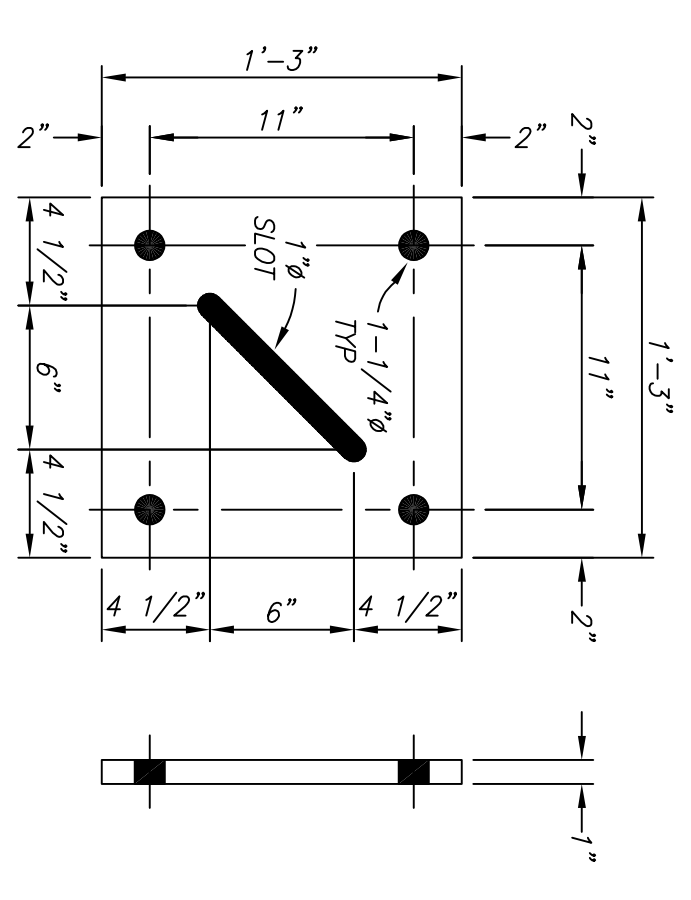
A2 ASSEMBLY
SCALE: 1"=1'-0"



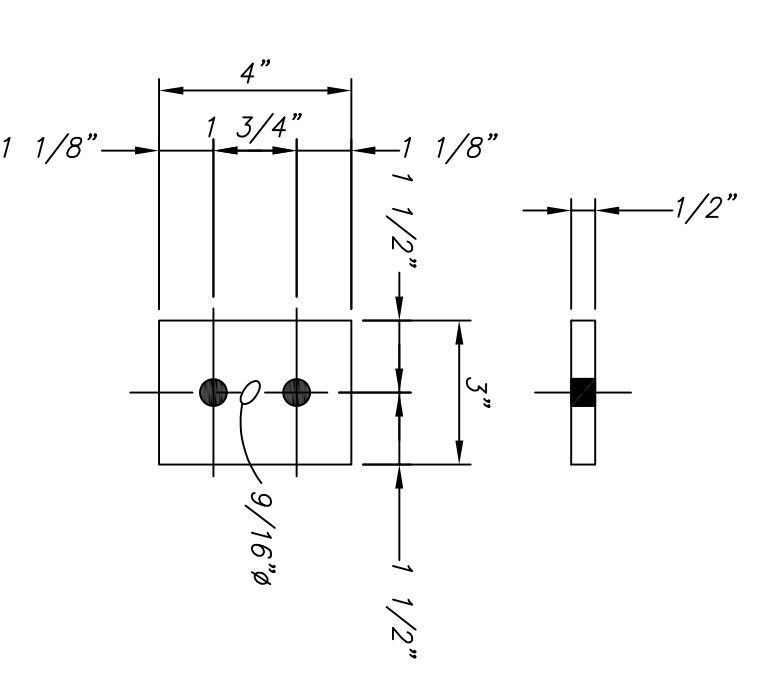
A50 ASSEMBLY
SCALE: 1"=1'-0"



L14 DETAIL
SCALE: 1/4"=1"



P4 DETAIL
SCALE: 1/8"=1"



P79 DETAIL
SCALE: 1/4"=1"

Project: OKANOGAN COUNTY PUD No. 1
115/13.8KV SUBSTATION

Drawing: 115Kv BUS SUPPORT - LOW & HIGH
DESIGNED BY: ENGINEER
SCALE: W.D. No.

REV.	DATE	DESCRIPTION	ENGINEER	DRAWN	SHEET
A	10/16/19	115/13.8KV SUBSTATION	AMN	KLD	1 OF 1
0	10/31/19	115Kv BUS SUPPORT - LOW & HIGH			DWG #

AS SHOWN XXXXXX 10/16/19 TDNA-S8-01